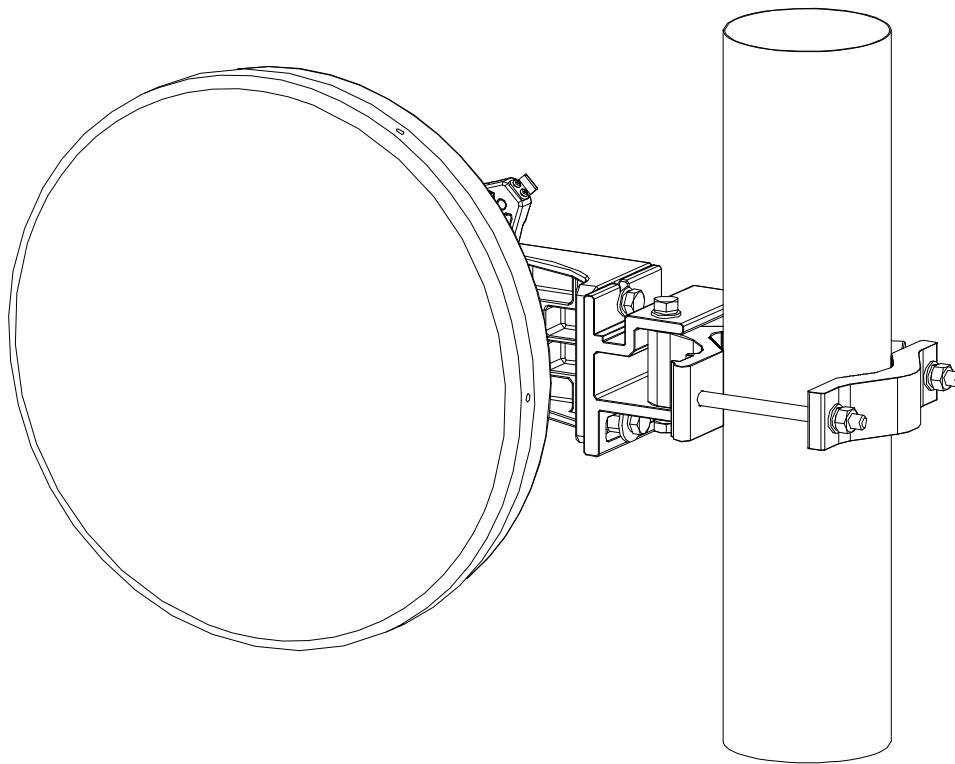


Installation Instructions

For 0.3m Ultra-High Performance Antenna



Remarks: Before Installation, please read the instructions carefully.

- ◆ This instruction booklet is for the installation of a 0.3m ultra-high performance microwave antenna.
- ◆ Installation, maintenance and removal of the antenna system should be carried out by a qualified, experienced person.
- ◆ To guarantee performance, the antenna system should be inspected in line with local practice and at least once a year by a qualified person.



CONTENTS

1. Requirements for Installation	1
1.1 Mounting Pole	1
1.2 Tools Required for Installation	1
1.3 Torque Settings for Standard Parts.....	1
2. Open the Package and Identify Parts	1
3. Connect Bracket Assembly and Reflector Assembly	2
3.1 Connect Hanging Bracket and Antenna	2
3.2 Coarse Elevation Adjustment	2
4. Mounting Antenna onto Pole	3
4.1 Antenna installation	3
5. Antenna Adjustment.....	4
5.1 Azimuth Adjustment.....	4
5.2 Elevation Adjustment.....	4
5.3 Tighten and Inspect	5

1. Requirements for Installation

1.1 Mounting Pole

The microwave antenna can be fixed to a Mounting Pole (not supplied) with a diameter between $\varnothing 50\text{mm}$ and $\varnothing 114\text{mm}$.

1.2 Tools Required for Installation

- 13mm Open-end Spanners
- 16mm Open-end Spanners
- Torque Spanner (*Recommended*)

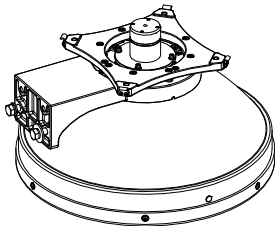
1.3 Torque Settings for Standard Parts

Use the following torque settings to assembly the antenna:

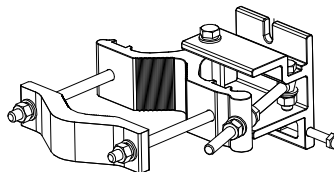
Table of Torque Settings

Bolt size	Torque (N·m)
M3	0.6
M4	1.3
M5	3
M6	5
M10	28

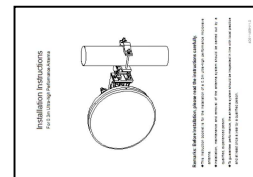
2. Open the Package and Identify Parts



Antenna Assembly



Bracket Assembly



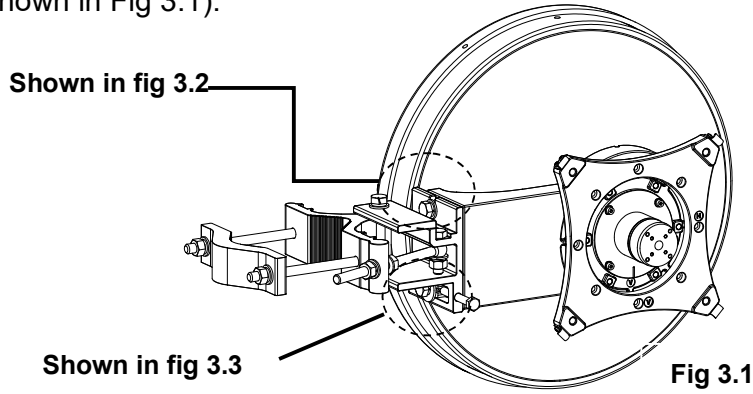
Installation Instructions

Fig 2.1 Parts List

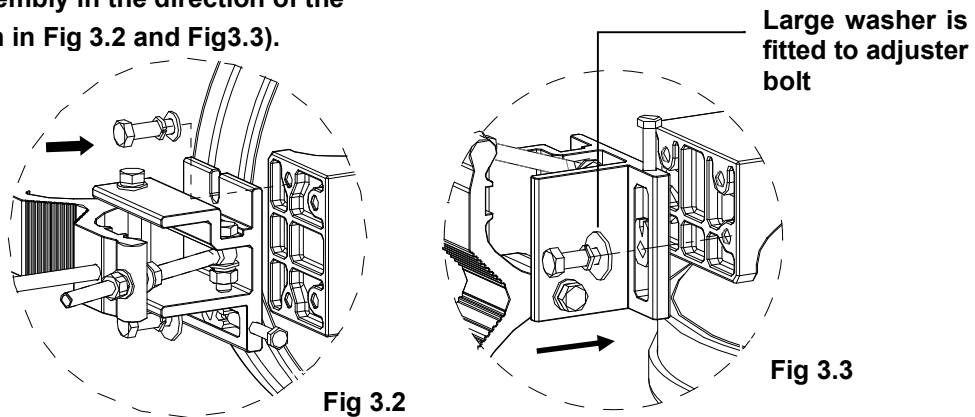
3. Connect Bracket Assembly and Reflector Assembly

3.1 Connect Hanging Bracket and Antenna

As shown in the diagrams below, connect the Bracket Assembly and Antenna Assembly by bolts (shown in Fig 3.1).



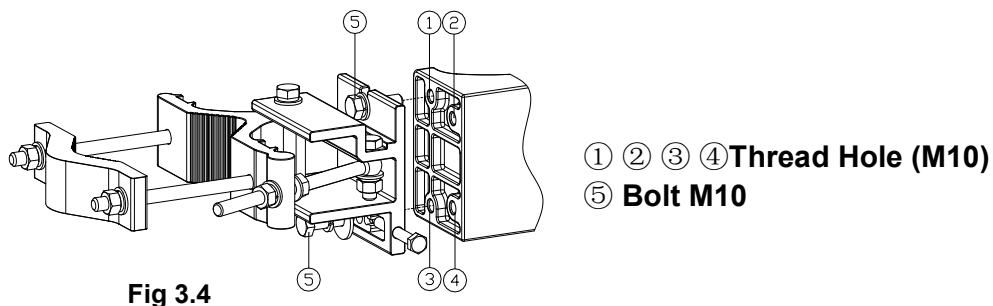
Use bolt to connect Bracket Assembly to Antenna Assembly in the direction of the arrow (shown in Fig 3.2 and Fig3.3).



3.2 Coarse Elevation Adjustment

Make coarse elevation adjustment (shown in Fig 3.4): loosen the bolts ⑤. Select the correct holes for the range of adjustment required based on the following table. Tighten bolts ⑤ after adjustment is complete.

Use Bolt holes	Range of Adjustment
①&③(default)	-15° to +15°
①&④	+10° to +30°
②&③	-30° to -10°



4. Mounting Antenna onto Pole

4.1 Antenna installation

The antenna is suitable for mounting on the right hand or left hand side of the pole. The diagram in Fig. 4.1 shows the mounting details for left hand and right hand use.

Left-hand installation view

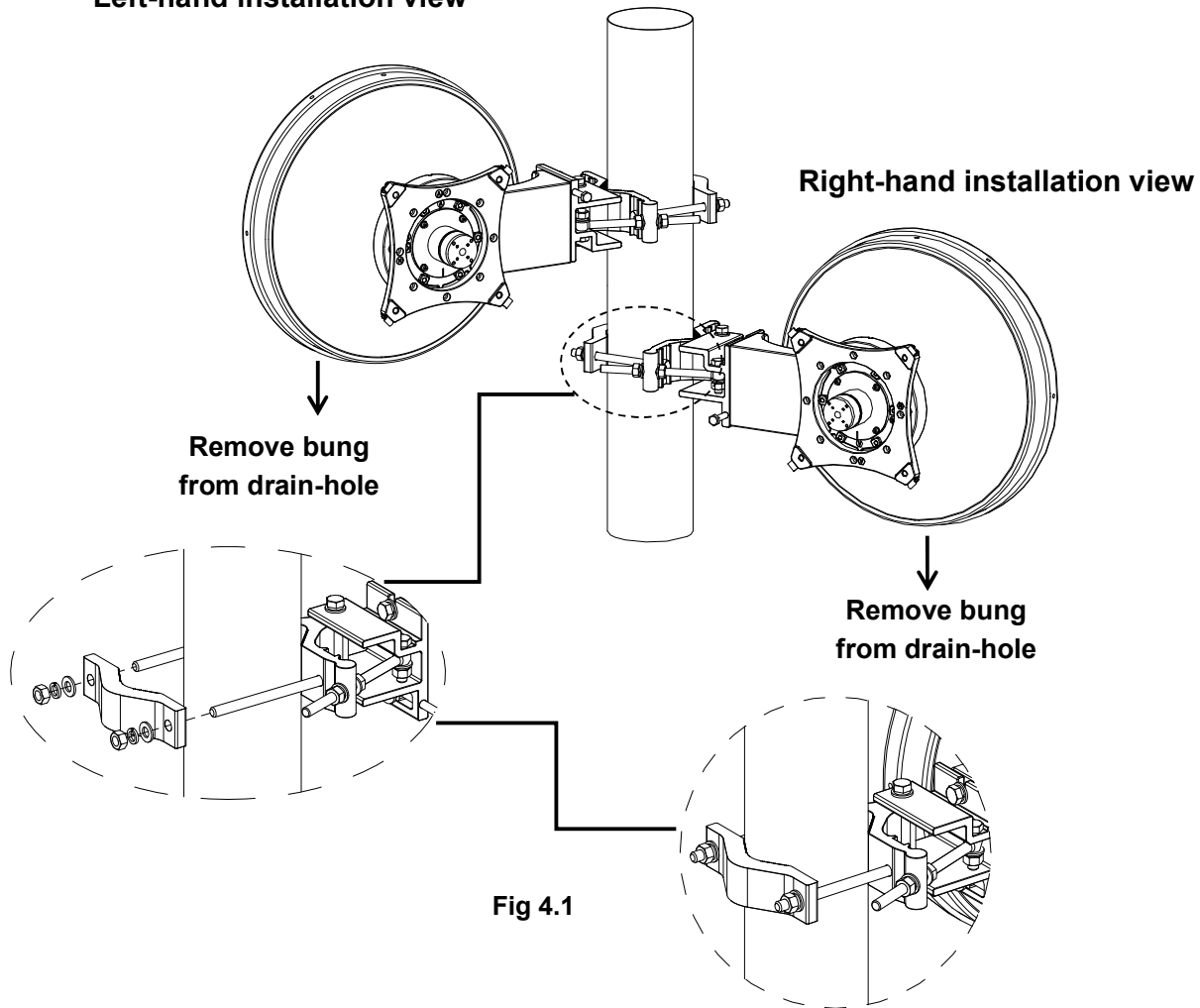


Fig 4.1

Attach Antenna to pole using the clamp (shown Fig 4.1). Align the antenna to approximately the final direction and tighten clamp bolts.

Remove the bung from the bottom drain-hole (shown Fig 4.2). Ensure that the top drain hole bung is fitted securely.

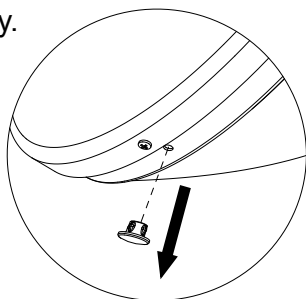


Fig 4.2

5. Antenna Adjustment

5.1 Azimuth Adjustment

Make coarse azimuth adjustment

Referring to Fig 5.1, slightly loosen the 2 nuts ① of the Clamp ②. Then push the whole antenna structure slowly round the mounting pole. Point the antenna in approximately the correct direction. Use a compass to determine the antenna's position if necessary, and then tighten the nuts ①.

Make fine azimuth adjustment

Loosen both pivot bolts ⑤ & ⑥, and then adjust nuts ③ of Azimuth Adjustor ④ back and forth slowly. Antenna can make fine azimuth adjustment from -15° to $+15^{\circ}$. Tighten Bolts ⑤ & ⑥ and adjuster ④ after the adjustment is complete.

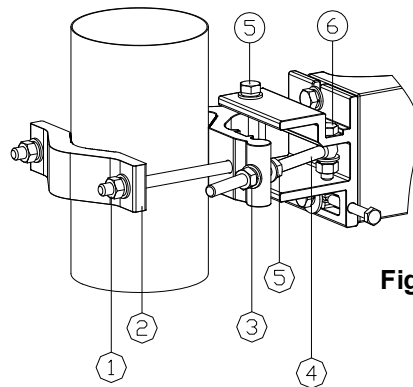


Fig 5.1

①③Nut M10 ②Clamp ④Azimuth Adjustor ⑤⑥Bolt M10

5.2 Elevation Adjustment

Coarse elevation adjustment was made in section 3.2 by selecting the correct mounting holes for the elevation required. Make fine elevation adjustment (shown in Fig 5.2) by loosening the bolts ①, and then rotate Elevation Adjustor ② clockwise or counter clockwise. The antenna has a fine adjustment of $\pm 15^{\circ}$. Tighten bolts ① after the adjustment is complete.

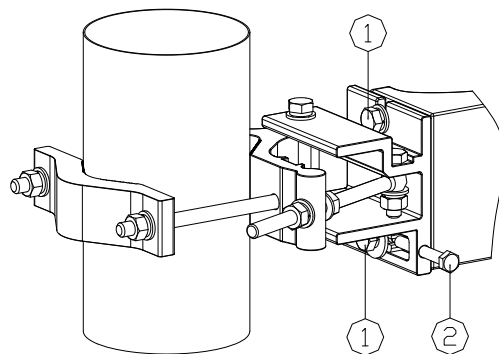


Fig 5.2

①Bolt M10 ②Elevation Adjustor



5.3 Tighten and Inspect

Tighten all the bolts to the recommended torque after antenna assembly and adjustment is complete.

Inspect the Antenna to ensure that the installation is safe and all instructions have been followed correctly.